

DIESEL REBUILD KITS

SERIES 60 PARTS CATALOG

www.DieselRebuildKits.com

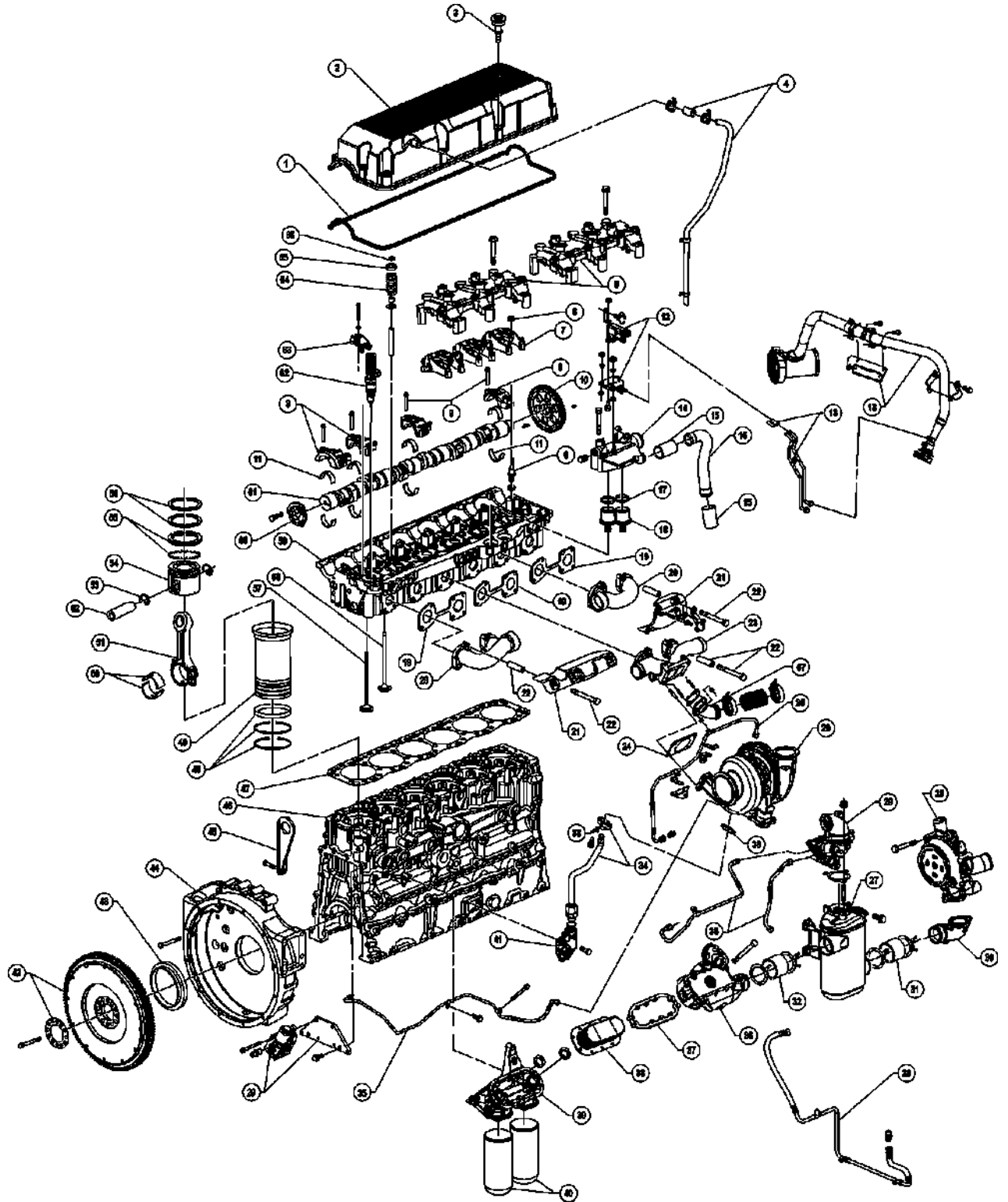
888-901-4795

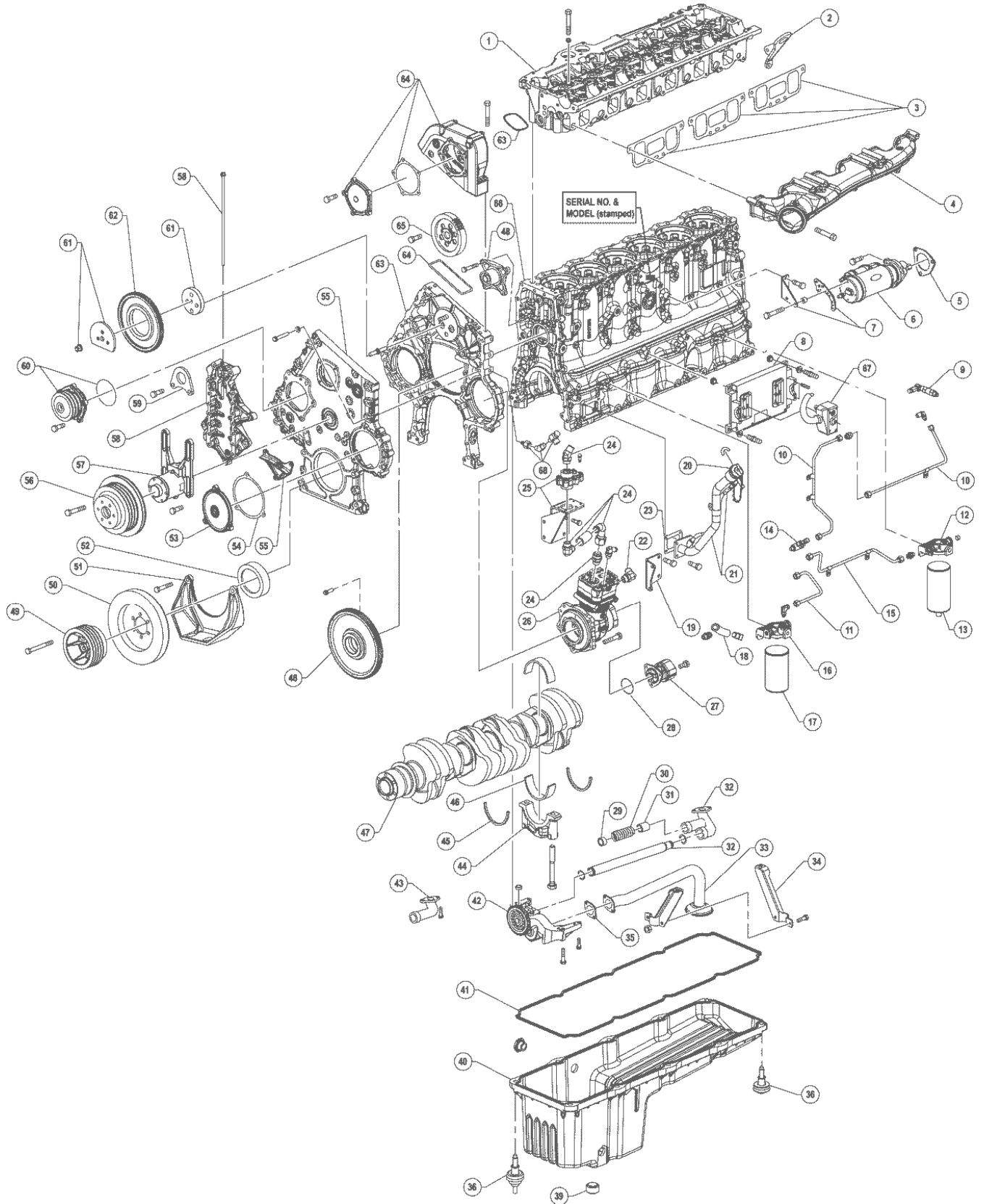
888-504-6960



DETROIT DIESEL







11.1L, 12.7L Series 60 In-Frame Overhaul www.Dieselrebuildkits.com

| KIT NUMBER | COMPONENT NO. | QTY. | PART SIZE | PART DESCRIPTION | PART APPLICATION |
|------------|---------------|------|-----------|-----------------------|--|
| S60 | 23519625 | 6 | | Cylinder Kit Complete | Engs. w/Standard Liner; 2.50 mm top ring; round piston design |
| | 23519637 | 6 | | Cylinder Kit Complete | Engs. w/Standard Liner; 3.50 mm top ring |
| | 23523951 | 6 | | Cylinder Kit Complete | Engs. w/Top Liner Cooling (TLC); 2.50 mm top ring; round piston design |
| | 23523952 | 6 | | Cylinder Kit Complete | Engs. w/Top Liner Cooling (TLC); 3.50 mm top ring |
| | 23523954 | 6 | | Cylinder Kit Complete | Engs. w/Top Liner Cooling (TLC); 2.50 mm top ring; oval piston design |
| | 8929710 | 6 | Std. | Rod Bearing Pair | 1.7100" or 43.430 mm O.A.L. |
| | 8929711 | 6 | .254 mm | Rod Bearing Pair | 1.7100" or 43.430 mm O.A.L. |
| | 8929712 | 6 | .508 mm | Rod Bearing Pair | 1.7100" or 43.430 mm O.A.L. |
| | 8929713 | 6 | .762 mm | Rod Bearing Pair | 1.7100" or 43.430 mm O.A.L. |
| | 23515581 | 6 | Std. | Rod Bearing Pair | 1.8670." or 47.430 mm O.A.L. |
| | 23515582 | 6 | .254 mm | Rod Bearing Pair | 1.8670." or 47.430 mm O.A.L. |
| | 23515583 | 6 | .508 mm | Rod Bearing Pair | 1.8670." or 47.430 mm O.A.L. |
| | 23515584 | 6 | .762 mm | Rod Bearing Pair | 1.8670." or 47.430 mm O.A.L. |
| | 8929670A | 6 | Std. | Main Bearing Plain | |
| | 8929671A | 6 | .254 mm | Main Bearing Plain | |
| | 8929672A | 6 | .508 mm | Main Bearing Plain | |
| | 8929673A | 6 | .762 mm | Main Bearing Plain | |
| | 8929680 | 1 | Std. | Main Bearing Flanged | |
| | 8929681 | 1 | .254 mm | Main Bearing Flanged | |
| | 8929682 | 1 | .508 mm | Main Bearing Flanged | |
| | 8929683 | 1 | .762 mm | Main Bearing Flanged | |
| | 8929085 | 2 | Std. | Thrust Washer | |
| | 8929697 | 2 | .127 mm | Thrust Washer | |
| | 8929698 | 2 | .254 mm | Thrust Washer | |
| | 8929102 | 1 | | Oil Pan Gasket | |
| | 23501572 | 1 | | Head Gasket Set | |

11.1L, 12.7L Series 60 Complete Overhaul

| KIT NUMBER | COMPONENT NO. | QTY. | PART SIZE | PART DESCRIPTION | PART APPLICATION |
|---------------|---------------|------|-----------|-----------------------|--|
| S60-OH | 23519625 | 6 | | Cylinder Kit Complete | Engs. w/Standard Liner; 2.50 mm top ring; round piston design |
| | 23519637 | 6 | | Cylinder Kit Complete | Engs. w/Standard Liner; 3.50 mm top ring |
| | 23523951 | 6 | | Cylinder Kit Complete | Engs. w/Top Liner Cooling (TLC); 2.50 mm top ring; round piston design |
| | 23523952 | 6 | | Cylinder Kit Complete | Engs. w/Top Liner Cooling (TLC); 3.50 mm top ring |
| | 23523954 | 6 | | Cylinder Kit Complete | Engs. w/Top Liner Cooling (TLC); 2.50 mm top ring; oval piston design |
| | 8929710 | 6 | Std. | Rod Bearing Pair | 1.7100" or 43.430 mm O.A.L. |
| | 8929711 | 6 | .254 mm | Rod Bearing Pair | 1.7100" or 43.430 mm O.A.L. |
| | 8929712 | 6 | .508 mm | Rod Bearing Pair | 1.7100" or 43.430 mm O.A.L. |
| | 8929713 | 6 | .762 mm | Rod Bearing Pair | 1.7100" or 43.430 mm O.A.L. |
| | 23515581 | 6 | Std. | Rod Bearing Pair | 1.8670." or 47.430 mm O.A.L. |
| | 23515582 | 6 | .254 mm | Rod Bearing Pair | 1.8670." or 47.430 mm O.A.L. |
| | 23515583 | 6 | .508 mm | Rod Bearing Pair | 1.8670." or 47.430 mm O.A.L. |
| | 23515584 | 6 | .762 mm | Rod Bearing Pair | 1.8670." or 47.430 mm O.A.L. |
| | 8929670A | 6 | Std. | Main Bearing Plain | |
| | 8929671A | 6 | .254 mm | Main Bearing Plain | |
| | 8929672A | 6 | .508 mm | Main Bearing Plain | |
| | 8929673A | 6 | .762 mm | Main Bearing Plain | |
| | 8929680 | 1 | Std. | Main Bearing Flanged | |
| | 8929681 | 1 | .254 mm | Main Bearing Flanged | |
| | 8929682 | 1 | .508 mm | Main Bearing Flanged | |
| | 8929683 | 1 | .762 mm | Main Bearing Flanged | |
| | 8929085 | 2 | Std. | Thrust Washer | |
| | 8929697 | 2 | .127 mm | Thrust Washer | |
| | 8929698 | 2 | .254 mm | Thrust Washer | |
| | 23512691 | 1 | | Complete Gasket Set | Crankshaft seals not included |

Engine Finding Index www.Dieselrebuildkits.com

| Engine | Line No. | Engine | Line No. |
|---|---|---|---|
| 11.1L 677 SOHC Turbo-Diesel L6 5.118" Bore..... | 1 | 12.7L 774 SOHC Turbo-Diesel L6 5.118" Bore..... | 2 |
| Engine Code Index | | | |
| Engine Code | Engine Description | Line No. | Line No. |
| 60 Series ... Multi-Purpose Engines..... | 11.1L 677 SOHC Turbo-Diesel L6 5.118" Bore..... | 1 | 60 Series ... Multi-Purpose Engines..... 12.7L 774 SOHC Turbo-Diesel L6 5.118" Bore..... |

Multi-Purpose Engines Series 60 Eng. 1 11.1L 677 SOHC Turbo-Diesel L6, 5.118" Bore

| CYL. HEAD & PARTS | | | | |
|-------------------|-----------------------------|------------|------|--|
| QTY | GASKETS | PART NO. | SIZE | DESCRIPTION |
| 1 | Valve Cover Gasket | 23506153 * | | Intermediate to upper rocker cover gskt.; 98.38" circumference; Diamond shaped 0.146" thick; For 3 piece cover; Use w/O.E. No. 23505973 rocker cover |
| 1 | Valve Cover Gasket | 23511992 * | | Intermediate to upper rocker cover gskt.; 98.38" circumference; Diamond shaped 0.186" thick; For 3 piece cover |
| 1 | Valve Cover Gasket | 8929803 * | | Lower to upper rocker cover gskt.; 106.68" circumference; Diamond shaped 0.146" thick; for 2 piece cover; Use w/O.E. No. 8929653 rocker cover |
| 1 | Valve Cover Gasket | 23511991 * | | Lower to upper rocker cover gskt.; 106.68" circumference; Diamond shaped 0.186" thick; For 2 piece cover |
| 1 | Valve Cover Gasket | 23522269 * | | New design rocker cover; Black polyacrylate |
| 1 | Valve Cover Gasket | 23516322 | | Standard rocker cover; Gray silicone |
| 1 | Breather Seal Ring | 5103646 | | |
| 1 | Head Gasket | 23530421 | | |
| 1 | Head Gasket | 23522588 + | | When depleted use 23530421 |
| 1 | Head Set | 23501572 | | |
| QTY | FREEZE PLUGS | PART NO. | SIZE | DESCRIPTION |
| 2 | Pipe Plug | 8923313 | | Cylinder head |
| QTY | HEAD BOLTS | PART NO. | SIZE | DESCRIPTION |
| 38 | Head Bolt | 23530768 * | | |
| 38 | Washer | 8929328 | | Cylinder head bolt |
| QTY | MISCELLANEOUS | PART NO. | SIZE | DESCRIPTION |
| 8 | Bolt | 11504822 | | Rocker cover mntg. |
| QTY | MANIFOLD STUDS | PART NO. | SIZE | DESCRIPTION |
| 4 | Exhaust Manifold Stud | 23507438 | | Manifold to Turbo; M10 x 1.5 x 44.0 |
| 4 | Exhaust Manifold Stud | 8929425 | | Manifold to Turbo; M10 x 1.5 x 50.0 |
| QTY | VALVE | PART NO. | SIZE | DESCRIPTION |
| 12 | Intake | 8929589 | | 30 deg. seat; Also available as Sealed Power No. V2514; 1.7320" Head Dia., .3421" Stem Dia., 8.4980" O.A.L. |
| 12 | Exhaust | 23506350 | | Identification H |
| 12 | Exhaust | 8929590 | | 30 deg. seat; Identification U; Also available as Sealed Power No. V3947; 1.5760" Head Dia., .3421" Stem Dia., 8.4980" O.A.L. |
| 12 | Exhaust Valve Kit | 23507504 | | Identification H; Incl. valve, valve seal, keeper & rotocap |
| 12 | Exhaust Valve Kit | 23501577 | | Identification U; Incl. valve, valve seal, keeper & rotocap |
| 12 | Intake Valve Kit | 23501576 | | Incl. valve, valve seal, keeper & rotocap |
| 48 | Keeper | 8929573 | | |
| QTY | VALVE SEAT | PART NO. | SIZE | DESCRIPTION |
| 12 | Exh. | 8929126 | | |
| 12 | Int. | 8929127 | | |
| QTY | VALVE GUIDE | PART NO. | SIZE | DESCRIPTION |
| 24 | Guide | 23518571 | | Exh.; 14.30MM - 14.32MM Dia. |
| 24 | Guide | 23518572 | | Exh.; 14.43MM - 14.45MM Dia. |
| QTY | VALVE SPRING | PART NO. | SIZE | DESCRIPTION |
| 24 | Spring | 8929415 | | Exh. |
| QTY | VALVE MISC. | PART NO. | SIZE | DESCRIPTION |
| 24 | Rotocap | 8929105 | | |
| 4 | Isolator, Rocker Cover Bolt | 8929255 | | Use w/One piece rocker cover |
| 4 | Isolator, Rocker Cover Bolt | 23517912 | | Use w/One piece rocker cover |
| 10 | Isolator, Rocker Cover Bolt | 23517911 | | Use w/Two piece rocker cover |
| 1 | Oil Fill Cap | 5117362 | | |
| 1 | Chain, Oil Filler Cap | 5113825 | | |

(continued on next page)

Detroit Diesel www.Dieselrebuildkits.com

| 1 Multi-Purpose Engines Series 60 Eng. | | | | |
|--|----------------------------------|-----------------|-------------|---|
| (cont.) 11.1L 677 SOHC Turbo-Diesel L6, 5.118" Bore | | | | |
| CYL. HEAD & PARTS (cont.) | | | | |
| QTY | VALVE MISC. (cont.) | PART NO. | SIZE | DESCRIPTION |
| 1 | Crankcase Breather | 5101760 | | 4" |
| QTY | VALVE SEAL | PART NO. | SIZE | DESCRIPTION |
| 24 | Valve Stem Seal | 23523930 | | |
| QTY | ROCKER PARTS | PART NO. | SIZE | DESCRIPTION |
| 12 | Adj. Screw | 23520819 | | Exh. valve adjusting |
| 12 | Adj. Screw | 23520818 | | Int. valve adjusting |
| 30 | Nut | 23514371 | | Arm adj. screw |
| 30 | Valve Button | 5138643 | | Arm adj. screw |
| IGNITION | | | | |
| QTY | IGNITION | PART NO. | SIZE | DESCRIPTION |
| 6 | Spark Plug | 23515946 | | Natural gas Eng. |
| 4 | Bolt | 11504822 | | ECM mounting plate |
| 8 | Isolator Bushing | 23502879 | | ECM mounting; DDECII |
| 8 | Isolator Bushing | 23512307 * | | ECM mounting; DDECIII |
| ELECTRICAL | | | | |
| QTY | ELECTRICAL | PART NO. | SIZE | DESCRIPTION |
| 5 | Bolt | 11504822 | | Tach drive cover |
| 1 | Gasket | 8929130 | | Tach drive cover |
| INT & EXH MANIFOLDS | | | | |
| QTY | INT. & EXH. MANIFOLDS | PART NO. | SIZE | DESCRIPTION |
| 12 | Bolt | 8929357 | | Manifold to head; M10 x 1.5 x 1.20 |
| 3 | Exhaust Manifold Gasket | 23511666 | | |
| 3 | Air Intake Gasket | 23517875 | | |
| CAMSHAFT GROUP | | | | |
| QTY | TIMING | PART NO. | SIZE | DESCRIPTION |
| 1 | Bushing | 8929108 | | Cam Gear |
| 1 | Pipe Plug | 8924517 | | Gear case cover; 3/8" x 18 square |
| 2 | Dowel Pin | 8929015 | | Gear case housing |
| QTY | CAMSHAFT/LIFTER | PART NO. | SIZE | DESCRIPTION |
| 2 | Bolt | 11504822 | | Balance shaft thrust plate |
| 1 | Sealing Ring | 23521935 | | Thrust plate; Cylinder head |
| 1 | O-Ring | 23528491 | | Thrust plate; Gear housing |
| 1 | O-Ring | 8929318 | | Thrust plate; Gear housing; When depleted use 23528491 |
| 1 | Oil Seal | 8929740 | | Cap bearing seal; .134" x .074" x .480" |
| 2 | Oil Seal | 23522975 * | | Front cap seal |
| 1 | Oil Seal | 23521894 | | Thrust plate; Cylinder head |
| ACCESSORY DRIVE | | | | |
| QTY | ACCESSORY DRIVE | PART NO. | SIZE | DESCRIPTION |
| 1 | Lock Ring | 23509204 | | Accessory drive |
| 1 | Lock Ring | 23511746 | | Accessory gear |
| 1 | Lock Ring | 8929062 | | Air compressor |
| 1 | Lock Ring | 23505643 | | Power steering pump |
| 1 | Ball Brg. | 23518178 | | Accessory drive |
| 1 | Ball Brg. | 23509203 | | Accessory gear shaft |
| 1 | Ball Brg. | 8929024 | | Bearing assembly |
| 1 | Ball Brg. | 23503704 | | Fan shaft inner |
| 1 | Ball Brg. | 23503535 | | Fan shaft outer |
| 1 | Cylindrical Brg. | 23511745 | | Accessory drive |
| 2 | Snap Ring | 8929064 | | Accessory drive; 3.121" OD |
| 1 | Retaining Ring | 8929216 | | Accessory drive; 1.618" OD |
| 1 | Retaining Ring | 8929063 | | Accessory drive; 3.734" OD |
| 1 | O-Ring | 8929253 | | Acc. drive cover; .139" x 4.609" ID |
| 1 | Gasket | 8929130 | | Upper right rear & cam access cover |
| 1 | Gasket | 8929299 | | Acc. drive front |
| 1 | Redi-Sleeve | 99133 | | Use w/8929154 seal |
| 1 | Oil Seal | 8929154 | | Oil accessory drive; Also available as National No. 484156V |
| AIR COMPRESSOR | | | | |
| QTY | AIR COMPRESSOR | PART NO. | SIZE | DESCRIPTION |
| 1 | Ball Brg. | 8929820 | | |
| 1 | Drive Coupling | 5141773 | | Air compressor drive |
| 1 | Gasket | 8929299 | | Drive housing |

(continued on next page)

Multi-Purpose Engines Series 60 Eng. 1
11.1L 677 SOHC Turbo-Diesel L6, 5.118" Bore (cont.)

| AIR COMPRESSOR (cont.) | | | | |
|------------------------|-------------------------------|------------|------|---|
| QTY | AIR COMPRESSOR (cont.) | PART NO. | SIZE | DESCRIPTION |
| 1 | Air Compressor Mounting Gskt. | 23515145 | | |
| FUEL SYSTEM & PARTS | | | | |
| QTY | FUEL INJECTION | PART NO. | SIZE | DESCRIPTION |
| 6 | Fuel Injector Seal Ring | 23515470 | | Injector hole tube |
| 2 | Fuel Injector Seal Ring | 5234699 | | Lower |
| 1 | Fuel Injector Seal Ring | 5234702 | | Upper |
| 6 | Injector Hole Tube Kit | 23501580 | | |
| 6 | Adj. Screw | 23520820 | | Injector adjusting |
| 6 | Bolt | 8929393 * | | Injector clamp |
| QTY | FUEL FILTERS & PUMP | PART NO. | SIZE | DESCRIPTION |
| 1 | Fuel Pump Coupling | 23505249 | | For high capacity fuel pump |
| 1 | Fuel Pump Coupling | 8929479 | | For std. capacity fuel pump |
| 1 | Fuel Pump Coupling | 8929787 | | 15.875MM ID |
| 1 | Fuel Pump Drive | 23506558 | | For high capacity fuel pump |
| 1 | Fuel Pump Drive | 23511964 | | For std. capacity fuel pump |
| 1 | Fuel Pump Hub | 8929480 | | 12.70MM ID |
| 1 | Fuel Pump Gear | 23506546 | | Drive gear; .375 |
| 1 | Fuel Pump Gear | 23511959 | | Driven gear; .275 |
| 1 | Fuel Pump Drive Shaft | 23506545 | | Drive shaft |
| 1 | Fuel Pump Drive Shaft | 23506549 | | Driven shaft |
| 1 | Fuel Cap | 23506555 | | Pump Relief Valve |
| 1 | Fuel Pump Check Valve Kit | 23506563 * | | |
| 1 | Fuel Pump Check Valve | 8923528 | | Injector check valve |
| 1 | Fuel Pump Spacer | 23506560 | | Relief Valve |
| 1 | Fuel Pump Relief Valve Spring | 23506557 * | | |
| 1 | Sealing Ring | 23506556 | | Relief valve |
| 1 | Cylindrical Brg. | 8923526 | | Fuel pump shaft |
| 5 | Bolt | 11504822 | | Fuel pump drive assy. |
| 1 | Fuel Pump Repair Part | 23506564 | | Relief valve shear pin |
| 1 | Fuel Pump Body Plug | 23506553 | | |
| 1 | O-Ring | 8929253 | | Fuel cover; .139" x 4.609" ID |
| 1 | O-Ring | 23524657 | | Fuel/water separator |
| 1 | Fuel Pump Drive Adapter Gskt. | 5150193 | | |
| 1 | Fuel Pump Gasket | 23505248 | | Fuel pump mounting |
| QTY | TURBOCHARGER | PART NO. | SIZE | DESCRIPTION |
| 1 | Turbocharger Exhaust Gasket | 8929529 | | Inlet connection |
| 1 | Turbocharger Oil Return Gskt. | 8929285 | | |
| GOVERNOR | | | | |
| QTY | GOVERNOR | PART NO. | SIZE | DESCRIPTION |
| 1 | Retaining Ring | 9411502 | | Mechanical governor weight |
| COOLING SYSTEM | | | | |
| QTY | WATER PUMP | PART NO. | SIZE | DESCRIPTION |
| 1 | Water Pump Shaft | 8929157 | | Front mounted pumps |
| 1 | Water Pump Shaft | 23505896 | | Gear case mounted pumps |
| 1 | Water Pump Impeller | 8929512 | | Front mounted pumps |
| 1 | Water Pump Impeller | 23517973 | | Gear case mounted pumps |
| 1 | Water Pump Repair/Rebuild Kit | 23509105 | | |
| 1 | Water Pump Cover | 8922383 | | Non-metallic |
| 1 | Woodruff Key | 8929334 | | FWP shaft |
| 1 | Water Pump Retainer Ring | 8929427 | | Bearing & seal |
| 1 | Water Pump Retainer Ring | 8922407 | | FWP cover |
| 1 | Water Pump Mech. Shaft Seal | 23522433 | | Unitized seal |
| 1 | Ball Brg. | 8929422 | | Water pump shaft |
| 1 | Lock Nut | 11509584 | | Water pump |
| 1 | Water Pump Gasket | 23507073 | | |
| 1 | Rect. or Square Seal | 23505024 | | Water pump cover |
| 1 | Water Pump Seal Ring | 8929158 | | Water pump; Front mounted pumps |
| 1 | Water Pump Seal Ring | 23520377 | | Water pump; Gear case mounted pumps |
| 1 | Water Pump Seal Ring | 8929510 | | Water pump cover; Front mounted pumps |
| 1 | Oil Seal | 5103951 | | Fan shaft |
| 1 | Oil Seal | 8929213 | | Fan spindle |
| 1 | Oil Seal | 8929134 | | Water pump; Lip type |
| 1 | O-Ring | 23512048 | | Water pump cover; Gear case mounted pumps |
| 5 | Bolt | 11504822 | | Fan mount support |
| 2 | Bolt | 11504822 | | Water pump cover |

(continued on next page)

* New Item — Check For Availability

| 1 Multi-Purpose Engines Series 60 Eng. | | | | |
|--|----------------------------------|-----------------|-------------|---|
| (cont.) 11.1L 677 SOHC Turbo-Diesel L6, 5.118" Bore | | | | |
| COOLING SYSTEM (cont.) | | | | |
| QTY | WATER PUMP (cont.) | PART NO. | SIZE | DESCRIPTION |
| 1 | Retaining Ring | 8929216 | | Fan drive; 1.618" OD |
| 1 | Retaining Ring | 8929063 | | Fan drive; 3.734" OD |
| QTY | HOSES | PART NO. | SIZE | DESCRIPTION |
| 2 | Silicone Hose | 8929875 | | Water bypass tube |
| 2 | Silicone Hose | 23506325 | | Water pump to cooler |
| QTY | THERMOSTAT | PART NO. | SIZE | DESCRIPTION |
| 1 | Thermostat | 23503827 | | 160 Deg. |
| 1 | Thermostat | 23503825 | | 180 Deg. |
| 1 | Thermostat | 8929878 | | 190 Deg. |
| 2 | Oil Seal | 5132155 | | Thermostat |
| ENGINE BLOCK & PARTS | | | | |
| QTY | GASKETS | PART NO. | SIZE | DESCRIPTION |
| 1 | Oil Pan Gasket | 8929102 | | Standard oil pan; Gray silicone |
| 1 | Oil Pan Gasket | 23522279 * | | Use for oil pan w/o cord modified seal system |
| 10 | Oil Pan Isolator Bushing | 23517242 | | Oil pan |
| 10 | Bolt | 11504571 * | | Oil pan |
| 1 | Copper Washer | 23513842 | | Oil gauge adapter |
| 1 | Oil Seal | 8929740 | | Block to gear case; .134" x .074" x .480" |
| QTY | GASKET SETS | PART NO. | SIZE | DESCRIPTION |
| 1 | Complete Overhaul Gasket Set | 23512691 | | Crankshaft seals not incl. |
| QTY | CAM BEARINGS | PART NO. | SIZE | DESCRIPTION |
| 7 | Cam Brg. | 8929690 | STD | |
| 7 | Cam Brg. | 8929691 | .254MM | |
| 7 | Cam Brg. | 8929692 | .508MM | |
| 7 | Cam Brg. | 8929693 | .762MM | |
| QTY | OIL COOLERS & FILTERS | PART NO. | SIZE | DESCRIPTION |
| 1 | Oil Cooler | 8547625 | | 4 plate |
| 1 | Oil Cooler | 8547626 | | 8 plate |
| 6 | Bolt | 11504822 | | Transfer cooler adapter housing |
| 2 | O-Ring | 8929289 | | Oil cooler housing |
| 1 | Oil Cooler Core Gasket | 8929348 | | |
| 2 | Oil Cooler Seal Ring | 23508392 | | Filter adapter housing |
| 1 | Gasket | 23506247 | | Core housing |
| 2 | Rect. or Square Seal | 8929280 | | Oil cooler |
| QTY | FREEZE PLUGS | PART NO. | SIZE | DESCRIPTION |
| 1 | Pipe Plug | 8926993 | | |
| 1 | Pipe Plug | 8923313 | | Block |
| CRANKSHAFT/OIL PUMP | | | | |
| QTY | CRANKSHAFT & OIL PUMP | PART NO. | SIZE | DESCRIPTION |
| 1 | Crankshaft | 23515597 | | 12 hole |
| 1 | Vibration Damper | 8929294 | | |
| 1 | Ball Brg. | 23503707 | | Position Clutch pilot |
| 1 | Oil Seal/Sleeve Kit | 23513578 | | Rear; Double lip wrap around |
| 1 | Oil Seal/Sleeve Kit | 23516969 | | Rear; Teflon lip |
| 6 | Washer | 5133981 | | Vibration damper |
| 1 | Lo Pressure Regulator Valve | 8922740 | | |
| 1 | Bushing | 5127978 * | | Oil pump |
| 1 | Oil Pump Spring | 5126327 | | Outlet bypass valve |
| 1 | Bolt | 11504822 | | Inlet tube |
| 4 | Bolt | 11504822 | | Outlet pipe |
| 2 | Bolt | 11504822 | | Pressure regulator |
| 2 | Bolt | 11504822 | | Pressure relief vlv. |
| 1 | Bolt | 11504822 | | Screen bracket |
| 1 | Oil Pump Intake Gasket | 8929344 | | Pump to block |
| 1 | Oil Pump Outlet Gasket | 8929347 | | |
| 1 | Rect. or Square Seal | 8929341 | | Oil filter |
| 1 | Rect. or Square Seal | 8929340 | | Oil filter bypass |
| 1 | Lo Press. Reg. Body Gasket | 5117269 | | |
| 1 | Gasket | 8929302 | | Fill tube adapter |
| 1 | Gasket | 8929302 | | Oil filter cover |
| 1 | Oil Filter Seal Ring | 8929342 | | Oil filter adapter |
| 1 | Oil Drain Plug | 23511574 | | 1" Pipe plug |
| QTY | MAIN BEARINGS | PART NO. | SIZE | DESCRIPTION |
| 1 | Main Set | 7363M Std-10 | | |
| 6 | Plain Main Brg. | 8929670A | STD | |

(continued on next page)

* New Item — Check For Availability

Multi-Purpose Engines Series 60 Eng. 1
11.1L 677 SOHC Turbo-Diesel L6, 5.118" Bore (cont.)

CRANKSHAFT/OIL PUMP (cont.)

| QTY | MAIN BEARINGS (cont.) | PART NO. | SIZE | DESCRIPTION |
|-----|-----------------------|------------|--------|--|
| 6 | Plain Main Brg. | 8929671A | .254MM | |
| 6 | Plain Main Brg. | 8929672A | .508MM | |
| 6 | Plain Main Brg. | 8929673A | .762MM | |
| 1 | Flanged Main Brg. | 8929680 | STD | |
| 1 | Flanged Main Brg. | 8929681 | .254MM | |
| 1 | Flanged Main Brg. | 8929682 | .508MM | |
| 1 | Flanged Main Brg. | 8929683 | .762MM | |
| 1 | Lower End Bearing Kit | 23531604 * | | Incl. 1.7100" or 43.430MM O.A.L. rod bearings |
| 1 | Lower End Bearing Kit | 23531605 | | Incl. 1.8670" or 47.430MM O.A.L. rod bearings |
| 1 | Thrust Washer Set | 8929085S * | | Position Upper; Also available as Sealed Power No. 4771F |
| 2 | Thrust Washer | 8929085 | | Position Upper |
| 2 | Thrust Washer | 8929697 | | Position Upper; .127MM oversize |
| 2 | Thrust Washer | 8929698 | | Position Upper; .254MM oversize |

CYLINDER COMPONENTS

| QTY | LINERS | PART NO. | SIZE | DESCRIPTION |
|-----|-------------------------|------------|------|---|
| 6 | Liner w/o Sealing Ring | 23532361 * | | Engs. w/Standard liner |
| 6 | Liner w/o Sealing Ring | 8929442 | | Engs. w/Standard liner; When depleted use 23532361 |
| 6 | Liner w/o Sealing Ring | 23530226 * | | Engs. w/Top Liner Cooling (TLC) |
| 6 | Liner w/o Sealing Ring | 23523392 | | Engs. w/Top Liner Cooling (TLC); When depleted use 23530226 |
| 6 | Wet Sleeve | 23531249 * | | 23523392 liner incl. |
| 6 | Wet Sleeve | 23523948 | | 23523392 liner incl.; When depleted use 23531249 |
| 6 | Wet Sleeve | 23532468 * | | 8929442 liner incl. |
| 6 | Wet Sleeve | 23505278 | | 8929442 liner incl.; When depleted use 23532468 |
| 6 | Cylinder Kit Complete | 23532590 * | | Engs. w/Standard liner; 2.50MM top ring; round piston design |
| 6 | Cylinder Kit Complete | 23519625 | | Engs. w/Standard liner; 2.50MM top ring; round piston design; When depleted use 23532590 |
| 6 | Cylinder Kit Complete | 23519637 | | Engs. w/Standard liner; 3.50MM top ring |
| 6 | Cylinder Kit Complete | 23523954 | | Engs. w/Top Liner Cooling (TLC); 2.50MM top ring; oval piston design |
| 6 | Cylinder Kit Complete | 23532555 * | | Engs. w/Top Liner Cooling (TLC); 2.50MM top ring; round piston design |
| 6 | Cylinder Kit Complete | 23523951 | | Engs. w/Top Liner Cooling (TLC); 2.50MM top ring; round piston design; When depleted use 23532555 |
| 6 | Cylinder Kit Complete | 23523952 | | Engs. w/Top Liner Cooling (TLC); 3.50MM top ring |
| 6 | Sealing Ring, Liner | 8929013 | | Crevice seal |
| 12 | Sealing Ring, Liner | 8929176 | | D-ring seal |
| 6 | Cntr. Bore Insert | 23525500 | | |
| 6 | Lower Block Bore Sleeve | 20042 | | |

| QTY | PISTONS | PART NO. | SIZE | DESCRIPTION |
|-----|------------------------------|------------|------|--|
| 6 | Piston Kit w/Pin & Retainers | 23519646 | | Engs. w/Top Liner Cooling (TLC) & 2.50MM top ring. Oval piston design |
| 6 | Piston Kit w/Pin & Retainers | 23519624 | | Engs. w/Top Liner Cooling (TLC) & 2.50MM top ring. Round piston design |
| 6 | Piston Kit w/Pin & Retainers | 23519635 | | Engs. w/3.50MM top ring |
| 6 | Piston Skirt | 23521802 * | | Aluminum skirt for forged steel crown articulated piston |
| 6 | Piston Skirt | 23516681 | | Ductile iron for standard cross head piston |
| 6 | Pin | 8929087 | | |
| 12 | Piston Pin Bolt | 8929337 | | |
| 12 | Piston Pin Bolt Spacer | 8929504 * | | |
| 6 | Piston Cooling Nozzle | 23528493 * | | |

| QTY | CONNECTING RODS & BRGS. | PART NO. | SIZE | DESCRIPTION |
|-----|-------------------------|-----------|--------|---|
| 12 | Con. Rod Bolt | 8929355 * | | |
| 12 | Con. Rod Nut | 8929019 | | |
| 6 | Rod Pair | 8929712 | .508MM | O.A.L. 1.7100" or 43.430MM |
| 6 | Rod Pair | 8929713 | .762MM | O.A.L. 1.7100" or 43.430MM |
| 6 | Rod Pair | 8929710 | STD | O.A.L. 1.7100" or 43.430MM; Also available as Sealed Power No. 4770P |
| 6 | Rod Pair | 8929711 | .254MM | O.A.L. 1.7100" or 43.430MM; Also available as Sealed Power No. 4770P .25MM |
| 6 | Rod Pair | 23515583 | .508MM | O.A.L. 1.8670" or 47.430MM |
| 6 | Rod Pair | 23515584 | .762MM | O.A.L. 1.8670" or 47.430MM |
| 6 | Rod Pair | 23515581 | STD | O.A.L. 1.8670" or 47.430MM; Also available as Sealed Power No. 4770PA |
| 6 | Rod Pair | 23515582 | .254MM | O.A.L. 1.8670" or 47.430MM; Also available as Sealed Power No. 4770PA .25MM |

(continued on next page)

| 1 Multi-Purpose Engines Series 60 Eng. (cont.) 11.1L 677 SOHC Turbo-Diesel L6, 5.118" Bore | | | | |
|--|-----------------------------|------------|------|--|
| CYLINDER COMPONENTS (cont.) | | | | |
| QTY | PISTON RINGS | PART NO. | SIZE | DESCRIPTION |
| 6 | Ring Set Single Cylinder | 23503747 | STD | 2.50MM top ring |
| 6 | Ring Set Single Cylinder | 23505729 | STD | 3.50MM top ring |
| 6 | Compression Ring | 8929845 | | Bottom |
| 6 | Compression Ring | 8929844 | | Top; 2.50MM |
| 6 | Compression Ring | 23504941 | | Top; 3.50MM |
| 6 | Oil Ring | 23515500 | | |
| 6 | Oil Ring Expander | 23529379 * | | |
| 6 | Oil Ring Expander | 23515499 | | When depleted use 23529379 |
| KITS | | | | |
| QTY | OVERHAUL KIT | PART NO. | SIZE | DESCRIPTION |
| 1 | In-Frame Overhaul Kit | S60 | | |
| 1 | Complete Overhaul Kit | S60-OH | | |
| 2 Multi-Purpose Engines Series 60 Eng. 12.7L 774 SOHC Turbo-Diesel L6, 5.118" Bore | | | | |
| CYL. HEAD & PARTS | | | | |
| QTY | GASKETS | PART NO. | SIZE | DESCRIPTION |
| 1 | Valve Cover Gasket | 23506153 * | | Intermediate to upper rocker cover gskt.; 98.38" circumference; Diamond shaped 0.146" thick; For 3 piece cover; Use w/O.E. No. 23505973 rocker cover |
| 1 | Valve Cover Gasket | 23511992 * | | Intermediate to upper rocker cover gskt.; 98.38" circumference; Diamond shaped 0.186" thick; For 3 piece cover |
| 1 | Valve Cover Gasket | 8929803 * | | Lower to upper rocker cover gskt.; 106.68" circumference; Diamond shaped 0.146" thick; for 2 piece cover; Use w/O.E. No. 8929653 rocker cover |
| 1 | Valve Cover Gasket | 23511991 * | | Lower to upper rocker cover gskt.; 106.68" circumference; Diamond shaped 0.186" thick; For 2 piece cover |
| 1 | Valve Cover Gasket | 23522269 * | | New design rocker cover; Black polyacrylate |
| 1 | Valve Cover Gasket | 23516322 | | Standard rocker cover; Gray silicone |
| 1 | Breather Seal Ring | 5103646 | | |
| 1 | Head Gasket | 23530421 | | |
| 1 | Head Gasket | 23522588 + | | When depleted use 23530421 |
| 1 | Head Set | 23501572 | | |
| QTY | FREEZE PLUGS | PART NO. | SIZE | DESCRIPTION |
| 2 | Pipe Plug | 8923313 | | Cylinder head |
| QTY | HEAD BOLTS | PART NO. | SIZE | DESCRIPTION |
| 38 | Head Bolt | 23530768 * | | |
| 38 | Washer | 8929328 | | Cylinder head bolt |
| QTY | MISCELLANEOUS | PART NO. | SIZE | DESCRIPTION |
| 8 | Bolt | 11504822 | | Rocker cover mntg. |
| QTY | MANIFOLD STUDS | PART NO. | SIZE | DESCRIPTION |
| 4 | Exhaust Manifold Stud | 23507438 | | Manifold to Turbo; M10 x 1.5 x 44.0 |
| 4 | Exhaust Manifold Stud | 8929425 | | Manifold to Turbo; M10 x 1.5 x 50.0 |
| QTY | VALVE | PART NO. | SIZE | DESCRIPTION |
| 12 | Intake | 8929589 | | 30 deg. seat; Also available as Sealed Power No. V2514; 1.7320" Head Dia., .3421" Stem Dia., 8.4980" O.A.L. |
| 12 | Exhaust | 23506350 | | Identification H |
| 12 | Exhaust | 8929590 | | 30 deg. seat; Identification U; Also available as Sealed Power No. V3947; 1.5760" Head Dia., .3421" Stem Dia., 8.4980" O.A.L. |
| 12 | Exhaust Valve Kit | 23507504 | | Identification H; Incl. valve, valve seal, keeper & rotocap |
| 12 | Exhaust Valve Kit | 23501577 | | Identification U; Incl. valve, valve seal, keeper & rotocap |
| 12 | Intake Valve Kit | 23501576 | | Incl. valve, valve seal, keeper & rotocap |
| 48 | Keeper | 8929573 | | |
| QTY | VALVE SEAT | PART NO. | SIZE | DESCRIPTION |
| 12 | Exh. | 8929126 | | |
| 12 | Int. | 8929127 | | |
| QTY | VALVE GUIDE | PART NO. | SIZE | DESCRIPTION |
| 24 | Guide | 23518571 | | Exh.; 14.30MM - 14.32MM Dia. |
| 24 | Guide | 23518572 | | Exh.; 14.43MM - 14.45MM Dia. |
| QTY | VALVE SPRING | PART NO. | SIZE | DESCRIPTION |
| 24 | Spring | 8929415 | | Exh. |
| QTY | VALVE MISC. | PART NO. | SIZE | DESCRIPTION |
| 24 | Rotocap | 8929105 | | |
| 4 | Isolator, Rocker Cover Bolt | 8929255 | | Use w/One piece rocker cover |

(continued on next page)

Multi-Purpose Engines Series 60 Eng. 2
12.7L 774 SOHC Turbo-Diesel L6, 5.118" Bore (cont.)

| CYL. HEAD & PARTS (cont.) | | | | |
|--------------------------------------|----------------------------------|-----------------|-------------|---|
| QTY | VALVE MISC. (cont.) | PART NO. | SIZE | DESCRIPTION |
| 4 | Isolator, Rocker Cover Bolt | 23517912 | | Use w/One piece rocker cover |
| 10 | Isolator, Rocker Cover Bolt | 23517911 | | Use w/Two piece rocker cover |
| 1 | Oil Fill Cap | 5117362 | | |
| 1 | Chain, Oil Filler Cap | 5113825 | | |
| 1 | Crankcase Breather | 5101760 | 4" | |
| QTY | VALVE SEAL | PART NO. | SIZE | DESCRIPTION |
| 24 | Valve Stem Seal | 23523930 | | |
| QTY | ROCKER PARTS | PART NO. | SIZE | DESCRIPTION |
| 12 | Adj. Screw | 23520819 | | Exh. valve adjusting |
| 12 | Adj. Screw | 23520818 | | Int. valve adjusting |
| 30 | Nut | 23514371 | | Arm adj. screw |
| 30 | Valve Button | 5138643 | | Arm adj. screw |
| IGNITION | | | | |
| QTY | IGNITION | PART NO. | SIZE | DESCRIPTION |
| 6 | Spark Plug | 23515946 | | Natural gas Eng's. |
| 4 | Bolt | 11504822 | | ECM mounting plate |
| 8 | Isolator Bushing | 23502879 | | ECM mounting; DDECII |
| 8 | Isolator Bushing | 23512307 * | | ECM mounting; DDECIII |
| ELECTRICAL | | | | |
| QTY | ELECTRICAL | PART NO. | SIZE | DESCRIPTION |
| 5 | Bolt | 11504822 | | Tach drive cover |
| 1 | Gasket | 8929130 | | Tach drive cover |
| INT & EXH MANIFOLDS | | | | |
| QTY | INT. & EXH. MANIFOLDS | PART NO. | SIZE | DESCRIPTION |
| 12 | Bolt | 8929357 | | Manifold to head; M10 x 1.5 x 1.20 |
| 3 | Exhaust Manifold Gasket | 23511666 | | |
| 3 | Air Intake Gasket | 23517875 | | |
| CAMSHAFT GROUP | | | | |
| QTY | TIMING | PART NO. | SIZE | DESCRIPTION |
| 1 | Bushing | 8929108 | | Cam gear |
| 1 | Pipe Plug | 8924517 | | Gear case cover; 3/8" x 18 square |
| 2 | Dowel Pin | 8929015 | | Gear case housing |
| QTY | CAMSHAFT/LIFTER | PART NO. | SIZE | DESCRIPTION |
| 2 | Bolt | 11504822 | | Balance shaft thrust plate |
| 1 | Sealing Ring | 23521935 | | Thrust plate; Cylinder head |
| 1 | O-Ring | 23528491 | | Thrust plate; Gear housing |
| 1 | O-Ring | 8929318 | | Thrust plate; Gear housing; When depleted use 23528491 |
| 1 | Oil Seal | 8929740 | | Cap bearing seal; .134" x .074" x .480" |
| 2 | Oil Seal | 23522975 * | | Front cap seal |
| 1 | Oil Seal | 23521894 | | Thrust plate; Cylinder head |
| ACCESSORY DRIVE | | | | |
| QTY | ACCESSORY DRIVE | PART NO. | SIZE | DESCRIPTION |
| 1 | Lock Ring | 23509204 | | Accessory drive |
| 1 | Lock Ring | 23511746 | | Accessory gear |
| 1 | Lock Ring | 8929062 | | Air compressor |
| 1 | Lock Ring | 23505643 | | Power steering pump |
| 1 | Ball Brg. | 23518178 | | Accessory drive |
| 1 | Ball Brg. | 23509203 | | Accessory gear shaft |
| 1 | Ball Brg. | 8929024 | | Bearing assembly |
| 1 | Ball Brg. | 23503704 | | Fan shaft inner |
| 1 | Ball Brg. | 23503535 | | Fan shaft outer |
| 1 | Cylindrical Brg. | 23511745 | | Accessory drive |
| 2 | Snap Ring | 8929064 | | Accessory drive; 3.121" OD |
| 1 | Retaining Ring | 8929216 | | Accessory drive; 1.618" OD |
| 1 | Retaining Ring | 8929063 | | Accessory drive; 3.734" OD |
| 1 | O-Ring | 8929253 | | Acc. drive cover; .139" x 4.609" ID |
| 1 | Gasket | 8929130 | | Upper right rear & cam access cover |
| 1 | Gasket | 8929299 | | Acc. drive front |
| 1 | Redi-Sleeve | 99133 | | Use w/8929154 seal |
| 1 | Oil Seal | 8929154 | | Oil accessory drive; Also available as National No. 484156V |

(continued on next page)

2 Multi-Purpose Engines Series 60 Eng. (cont.) 12.7L 774 SOHC Turbo-Diesel L6, 5.118" Bore

| AIR COMPRESSOR | | | | |
|---------------------|-------------------------------|------------|------|---------------------------------------|
| QTY | AIR COMPRESSOR | PART NO. | SIZE | DESCRIPTION |
| 1 | Ball Brg. | 8929820 | | |
| 1 | Drive Coupling | 5141773 | | Air compressor drive |
| 1 | Gasket | 8929299 | | Drive housing |
| 1 | Air Compressor Mounting Gskt. | 23515145 | | Air Compressor Mntg. |
| FUEL SYSTEM & PARTS | | | | |
| QTY | FUEL INJECTION | PART NO. | SIZE | DESCRIPTION |
| 6 | Fuel Injector Seal Ring | 23515470 | | Injector hole tube |
| 2 | Fuel Injector Seal Ring | 5234699 | | Lower |
| 1 | Fuel Injector Seal Ring | 5234702 | | Upper |
| 6 | Injector Hole Tube Kit | 23501580 | | |
| 6 | Adj. Screw | 23520820 | | Injector adjusting |
| 6 | Bolt | 8929393 * | | Injector clamp |
| QTY | FUEL FILTERS & PUMP | PART NO. | SIZE | DESCRIPTION |
| 1 | Fuel Pump Coupling | 23505249 | | For high capacity fuel pump |
| 1 | Fuel Pump Coupling | 8929479 | | For std. capacity fuel pump |
| 1 | Fuel Pump Coupling | 8929787 | | 15.875MM ID |
| 1 | Fuel Pump Drive | 23506558 | | For high capacity fuel pump |
| 1 | Fuel Pump Drive | 23511964 | | For std. capacity fuel pump |
| 1 | Fuel Pump Hub | 8929480 | | 12.70MM ID |
| 1 | Fuel Pump Gear | 23506546 | | Drive gear; .375 |
| 1 | Fuel Pump Gear | 23511959 | | Driven gear; .275 |
| 1 | Fuel Pump Drive Shaft | 23506545 | | Drive shaft |
| 1 | Fuel Pump Drive Shaft | 23506549 | | Driven shaft |
| 1 | Fuel Cap | 23506555 | | Pump Relief Valve |
| 1 | Fuel Pump Check Valve Kit | 23506563 * | | |
| 1 | Fuel Pump Check Valve | 8923528 | | Injector check valve |
| 1 | Fuel Pump Spacer | 23506560 | | Relief Valve |
| 1 | Fuel Pump Relief Valve Spring | 23506557 * | | |
| 1 | Sealing Ring | 23506556 | | Relief valve |
| 1 | Cylindrical Brg. | 8923526 | | Fuel pump shaft |
| 5 | Bolt | 11504822 | | Fuel pump drive assy. |
| 1 | Fuel Pump Repair Part | 23506564 | | Relief valve shear pin |
| 1 | Fuel Pump Body Plug | 23506553 | | |
| 1 | O-Ring | 8929253 | | Fuel cover; .139" x 4.609" ID |
| 1 | O-Ring | 23524657 | | Fuel/water separator |
| 1 | Fuel Pump Drive Adapter Gskt. | 5150193 | | |
| 1 | Fuel Pump Gasket | 23505248 | | Fuel pump mounting |
| QTY | TURBOCHARGER | PART NO. | SIZE | DESCRIPTION |
| 1 | Turbocharger Exhaust Gasket | 8929529 | | Inlet connection |
| 1 | Turbocharger Oil Return Gskt. | 8929285 | | |
| GOVERNOR | | | | |
| QTY | GOVERNOR | PART NO. | SIZE | DESCRIPTION |
| 1 | Retaining Ring | 9411502 | | Mechanical governor weight |
| COOLING SYSTEM | | | | |
| QTY | WATER PUMP | PART NO. | SIZE | DESCRIPTION |
| 1 | Water Pump Shaft | 8929157 | | Front mounted pumps |
| 1 | Water Pump Shaft | 23505896 | | Gear case mounted pumps |
| 1 | Water Pump Impeller | 8929512 | | Front mounted pumps |
| 1 | Water Pump Impeller | 23517973 | | Gear case mounted pumps |
| 1 | Water Pump Repair/Rebuild Kit | 23509105 | | |
| 1 | Water Pump Cover | 8922383 | | Non-metallic |
| 1 | Woodruff Key | 8929334 | | FWP shaft |
| 1 | Water Pump Retainer Ring | 8929427 | | Bearing & seal |
| 1 | Water Pump Retainer Ring | 8922407 | | FWP cover |
| 1 | Water Pump Mech. Shaft Seal | 23522433 | | Unitized seal |
| 1 | Ball Brg. | 8929422 | | Water pump shaft |
| 1 | Lock Nut | 11509584 | | Water pump |
| 1 | Water Pump Gasket | 23507073 | | |
| 1 | Rect. or Square Seal | 23505024 | | Water pump cover |
| 1 | Water Pump Seal Ring | 8929158 | | Water pump; Front mounted pumps |
| 1 | Water Pump Seal Ring | 23520377 | | Water pump; Gear case mounted pumps |
| 1 | Water Pump Seal Ring | 8929510 | | Water pump cover; Front mounted pumps |
| 1 | Oil Seal | 5103951 | | Fan shaft |
| 1 | Oil Seal | 8929213 | | Fan spindle |
| 1 | Oil Seal | 8929134 | | Water pump; Lip type |

(continued on next page)

Multi-Purpose Engines Series 60 Eng. 2
12.7L 774 SOHC Turbo-Diesel L6, 5.118" Bore (cont.)

| COOLING SYSTEM (cont.) | | | | |
|---------------------------------|----------------------------------|-----------------|-------------|---|
| QTY | WATER PUMP (cont.) | PART NO. | SIZE | DESCRIPTION |
| 1 | O-Ring | 23512048 | | Water pump cover; Gear case mounted pumps |
| 5 | Bolt | 11504822 | | Fan mount support |
| 2 | Bolt | 11504822 | | Water pump cover |
| 1 | Retaining Ring | 8929216 | | Fan drive; 1.618" OD |
| 1 | Retaining Ring | 8929063 | | Fan drive; 3.734" OD |
| QTY | HOSES | PART NO. | SIZE | DESCRIPTION |
| 2 | Silicone Hose | 8929875 | | Water bypass tube |
| 2 | Silicone Hose | 23506325 | | Water pump to cooler |
| QTY | THERMOSTAT | PART NO. | SIZE | DESCRIPTION |
| 1 | Thermostat | 23503827 | | 160 Deg. |
| 1 | Thermostat | 23503825 | | 180 Deg. |
| 1 | Thermostat | 8929878 | | 190 Deg. |
| 2 | Oil Seal | 5132155 | | Thermostat |
| ENGINE BLOCK & PARTS | | | | |
| QTY | GASKETS | PART NO. | SIZE | DESCRIPTION |
| 1 | Oil Pan Gasket | 8929102 | | Standard oil pan; Gray silicone |
| 1 | Oil Pan Gasket | 23522279 * | | Use for oil pan w/o cord modified seal system |
| 10 | Oil Pan Isolator Bushing | 23517242 | | Oil pan |
| 10 | Bolt | 11504571 * | | Oil pan |
| 1 | Copper Washer | 23513842 | | Oil gauge adapter |
| 1 | Oil Seal | 8929740 | | Block to gear case; .134" x .074" x .480" |
| QTY | GASKET SETS | PART NO. | SIZE | DESCRIPTION |
| 1 | Complete Overhaul Gasket Set | 23512691 | | Crankshaft seals not incl. |
| QTY | CAM BEARINGS | PART NO. | SIZE | DESCRIPTION |
| 7 | Cam Brg. | 8929690 | STD | |
| 7 | Cam Brg. | 8929691 | .254MM | |
| 7 | Cam Brg. | 8929692 | .508MM | |
| 7 | Cam Brg. | 8929693 | .762MM | |
| QTY | OIL COOLERS & FILTERS | PART NO. | SIZE | DESCRIPTION |
| 1 | Oil Cooler | 8547625 | | 4 plate |
| 1 | Oil Cooler | 8547626 | | 8 plate |
| 6 | Bolt | 11504822 | | Transfer cooler adapter housing |
| 2 | O-Ring | 8929289 | | Oil cooler housing |
| 1 | Oil Cooler Core Gasket | 8929348 | | |
| 2 | Oil Cooler Seal Ring | 23508392 | | Filter adapter housing |
| 1 | Gasket | 23506247 | | Core housing |
| 2 | Rect. or Square Seal | 8929280 | | Oil cooler |
| QTY | FREEZE PLUGS | PART NO. | SIZE | DESCRIPTION |
| 1 | Pipe Plug | 8926993 | | |
| 1 | Pipe Plug | 8923313 | | Block |
| CRANKSHAFT/OIL PUMP | | | | |
| QTY | CRANKSHAFT & OIL PUMP | PART NO. | SIZE | DESCRIPTION |
| 1 | Crankshaft | 23515599 | | 12 Hole |
| 1 | Vibration Damper | 8929502 | | |
| 1 | Ball Brg. | 23503707 | | Position Clutch pilot |
| 1 | Oil Seal/Sleeve Kit | 23513578 | | Rear; Double lip wrap around |
| 1 | Oil Seal/Sleeve Kit | 23516969 | | Rear; Teflon lip |
| 6 | Washer | 5133981 | | Vibration damper |
| 1 | Lo Pressure Regulator Valve | 8922740 | | |
| 1 | Bushing | 5127978 * | | Oil pump |
| 1 | Oil Pump Spring | 5126327 | | Outlet bypass valve |
| 1 | Bolt | 11504822 | | Inlet tube |
| 4 | Bolt | 11504822 | | Outlet pipe |
| 2 | Bolt | 11504822 | | Pressure regulator |
| 2 | Bolt | 11504822 | | Pressure relief vlv. |
| 1 | Bolt | 11504822 | | Screen bracket |
| 1 | Oil Pump Intake Gasket | 8929344 | | Pump to block |
| 1 | Oil Pump Outlet Gasket | 8929347 | | |
| 1 | Rect. or Square Seal | 8929341 | | Oil filter |
| 1 | Rect. or Square Seal | 8929340 | | Oil filter bypass |
| 1 | Lo Press. Reg. Body Gasket | 5117269 | | |
| 1 | Gasket | 8929302 | | Fill tube adapter |
| 1 | Gasket | 8929302 | | Oil filter cover |
| 1 | Oil Filter Seal Ring | 8929342 | | Oil filter adapter |
| 1 | Oil Drain Plug | 23511574 | | 1" Pipe plug |

(continued on next page)

* New Item — Check For Availability

2 Multi-Purpose Engines Series 60 Eng.
(cont.) 12.7L 774 SOHC Turbo-Diesel L6, 5.118" Bore

| CRANKSHAFT/OIL PUMP (cont.) | | | | |
|------------------------------------|------------------------------------|-----------------|-------------|---|
| QTY | MAIN BEARINGS | PART NO. | SIZE | DESCRIPTION |
| 1 | Main Set | 7363M Std-10 | | |
| 6 | Plain Main Brg. | 8929670A | STD | |
| 6 | Plain Main Brg. | 8929671A | .254MM | |
| 6 | Plain Main Brg. | 8929672A | .508MM | |
| 6 | Plain Main Brg. | 8929673A | .762MM | |
| 1 | Flanged Main Brg. | 8929680 | STD | |
| 1 | Flanged Main Brg. | 8929681 | .254MM | |
| 1 | Flanged Main Brg. | 8929682 | .508MM | |
| 1 | Flanged Main Brg. | 8929683 | .762MM | |
| 1 | Lower End Bearing Kit | 23531604 * | | Incl. 1.7100" or 43.430MM O.A.L. rod bearings |
| 1 | Lower End Bearing Kit | 23531605 | | Incl. 1.8670" or 47.430MM O.A.L. rod bearings |
| 1 | Thrust Washer Set | 8929085S * | | Also available as Sealed Power No. 4771F |
| 2 | Thrust Washer | 8929085 | | Position Upper |
| 2 | Thrust Washer | 8929697 | | Position Upper; .127MM oversize |
| 2 | Thrust Washer | 8929698 | | Position Upper; .254MM oversize |
| CYLINDER COMPONENTS | | | | |
| QTY | LINERS | PART NO. | SIZE | DESCRIPTION |
| 6 | Liner w/o Sealing Ring | 23532361 * | | Engs. w/Standard liner |
| 6 | Liner w/o Sealing Ring | 8929442 | | Engs. w/Standard liner; When depleted use 23532361 |
| 6 | Liner w/o Sealing Ring | 23530226 * | | Engs. w/Top Liner Cooling (TLC) |
| 6 | Liner w/o Sealing Ring | 23523392 | | Engs. w/Top Liner Cooling (TLC); When depleted use 23530226 |
| 6 | Wet Sleeve | 23531249 * | | 23523392 liner incl. |
| 6 | Wet Sleeve | 23523948 | | 23523392 liner incl.; When depleted use 23531249 |
| 6 | Wet Sleeve | 23532468 * | | 8929442 liner incl. |
| 6 | Wet Sleeve | 23505278 | | 8929442 liner incl.; When depleted use 23532468 |
| 6 | Cylinder Kit Complete | 23532590 * | | Engs. w/Standard liner; 2.50MM top ring; round piston design |
| 6 | Cylinder Kit Complete | 23519625 | | Engs. w/Standard liner; 2.50MM top ring; round piston design; When depleted use 23532590 |
| 6 | Cylinder Kit Complete | 23519637 | | Engs. w/Standard liner; 3.50MM top ring |
| 6 | Cylinder Kit Complete | 23523954 | | Engs. w/Top Liner Cooling (TLC); 2.50MM top ring; oval piston design |
| 6 | Cylinder Kit Complete | 23532555 * | | Engs. w/Top Liner Cooling (TLC); 2.50MM top ring; round piston design |
| 6 | Cylinder Kit Complete | 23523951 | | Engs. w/Top Liner Cooling (TLC); 2.50MM top ring; round piston design; When depleted use 23532555 |
| 6 | Cylinder Kit Complete | 23523952 | | Engs. w/Top Liner Cooling (TLC); 3.50MM top ring |
| 6 | Sealing Ring, Liner | 8929013 | | Crevice seal |
| 12 | Sealing Ring, Liner | 8929176 | | D-ring seal |
| 6 | Cntr. Bore Insert | 23525500 | | |
| 6 | Lower Block Bore Sleeve | 20042 | | |
| QTY | PISTONS | PART NO. | SIZE | DESCRIPTION |
| 6 | Piston Kit w/Pin & Retainers | 23519646 | | Engs. w/Top Liner Cooling (TLC) & 2.50MM top ring. Oval piston design |
| 6 | Piston Kit w/Pin & Retainers | 23519624 | | Engs. w/Top Liner Cooling (TLC) & 2.50MM top ring. Round piston design |
| 6 | Piston Kit w/Pin & Retainers | 23519635 | | Engs. w/3.50MM top ring |
| 6 | Piston Skirt | 23521802 * | | Aluminum skirt for forged steel crown articulated piston |
| 6 | Piston Skirt | 23516681 | | Ductile iron for standard cross head piston |
| 6 | Pin | 8929087 | | |
| 12 | Piston Pin Bolt | 8929337 | | |
| 12 | Piston Pin Bolt Spacer | 8929504 * | | |
| 6 | Piston Cooling Nozzle | 23528493 * | | |
| QTY | CONNECTING RODS & BRGS. | PART NO. | SIZE | DESCRIPTION |
| 12 | Con. Rod Bolt | 8929355 * | | |
| 12 | Con. Rod Nut | 8929019 | | |
| 6 | Rod Pair | 8929712 | .508MM | O.A.L. 1.7100" or 43.430MM |
| 6 | Rod Pair | 8929713 | .762MM | O.A.L. 1.7100" or 43.430MM |
| 6 | Rod Pair | 8929710 | STD | O.A.L. 1.7100" or 43.430MM; Also available as Sealed Power No. 4770P |
| 6 | Rod Pair | 8929711 | .254MM | O.A.L. 1.7100" or 43.430MM; Also available as Sealed Power No. 4770P .25MM |
| 6 | Rod Pair | 23515583 | .508MM | O.A.L. 1.8670" or 47.430MM |
| 6 | Rod Pair | 23515584 | .762MM | O.A.L. 1.8670" or 47.430MM |
| 6 | Rod Pair | 23515581 | STD | O.A.L. 1.8670" or 47.430MM; Also available as Sealed Power No. 4770PA |

(continued on next page)

| CYLINDER COMPONENTS (cont.) | | | | |
|------------------------------------|--|-----------------|-------------|---|
| QTY | CONNECTING RODS & BRGS. (cont.) | PART NO. | SIZE | DESCRIPTION |
| 6 | Rod Pair | 23515582 | .254MM | O.A.L. 1.8670" or 47.430MM; Also available as Sealed Power No. 4770PA .25MM |
| QTY | PISTON RINGS | PART NO. | SIZE | DESCRIPTION |
| 6 | Ring Set Single Cylinder | 23503747 | STD | 2.50MM top ring |
| 6 | Ring Set Single Cylinder | 23505729 | STD | 3.50MM top ring |
| 6 | Compression Ring | 8929845 | | Bottom |
| 6 | Compression Ring | 8929844 | | Top; 2.50MM |
| 6 | Compression Ring | 23504941 | | Top; 3.50MM |
| 6 | Oil Ring | 23515500 | | |
| 6 | Oil Ring Expander | 23529379 * | | |
| 6 | Oil Ring Expander | 23515499 | | When depleted use 23529379 |
| KITS | | | | |
| QTY | OVERHAUL KIT | PART NO. | SIZE | DESCRIPTION |
| 1 | In-Frame Overhaul Kit | S60 | | |
| 1 | Complete Overhaul Kit | S60-OH | | |